

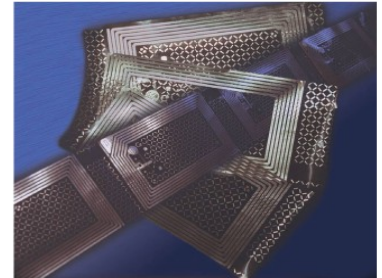
## RTMS - RFID Inline Test and Marking System

### RFID Test and Marking System for Inline Quality Control in Production Machines

The **RTMS** is designed for the inline quality control during the production of RFID components such as smart inlays, smart labels and tickets.

This high performance modular system - available in 3 different versions - is capable of simultaneously handling up to 8 lines in one production machine for testing and ink jet marking of bad labels.

The **RTMS** can be integrated into new and used production machines.



GENERAL DATA RTMS	
RFID reader systems	<ul style="list-style-type: none"> <li>- HF 13.56 Mhz</li> <li>- UHF 860 – 955 Mhz</li> <li>- customized readers integrateable</li> </ul>
Supported RFID chip types (Standard)	<ul style="list-style-type: none"> <li>- ISO 15693, ISO 14443-A/B and others</li> <li>- EPC1G2, ISO-18000</li> </ul>
Tag test type	GetID, Write (selectable)
Bad tag marking	<ul style="list-style-type: none"> <li>- high performance ink jet valve</li> <li>- other marking systems upon request</li> </ul>
Other features	<ul style="list-style-type: none"> <li>- write EPC</li> <li>- write user data</li> <li>- set/lock EAS and AFI</li> <li>- data and test result logging</li> <li>- statistics and simple production lot handling</li> </ul>

RTMS SERIES	<i>RTMS-40</i>	<i>RTMS-70</i>	<i>RTMS-CUST</i>
Max. units of reader / marker	1(2)	up to 4	up to 8
Control system	embedded PC	embedded PC	embedded PC
Max. throughput per reader unit - testing only	8 tags / sec.	12 tags / sec.	up to 10 tags / sec.
Typical production speed for smart labels - min. distance between two labels = 5mm)	40 m / min.	70 m / min.	20 to 40 m / min.
Optional tag (pre-) personalization	YES	YES	customized
Host interface	digital I/O Ethernet	digital I/O RS232/RS485 Ethernet	digital I/O RS232/RS485 Ethernet

## The Main Features and Highlights of the RTMS

- Extremely flexible and modular system.
- Designed to integrate easily into any type of RFID production or test equipment.
- A wide range of applications are supported. From small system single line production to multiline production with up to eight test and marking lines per system.
- Different RFID reader models to meet customer needs.
- Actually supported 13,56MHz readers are from Feig, SkyeTech and Sirit
- Actually supported UHF Readers are from Sirit and SkyeTech
- Other readers, including 125KHz can easily be integrated on request.
- High throughput with up to 12 tests/Second and line.
- Production/Test equipment interfacing is supported in different ways
  - digital I/O interface ( standard )
  - using a serial communication line ( optional ) or
  - via Ethernet ( optional )
- For bad part marking we recommend a pen marker but other types of systems like spray marker, stamping units, cutters, ink jet or laser printing systems (...) can be integrated on request.
- Depending on the RTMS system type pre-personalisation of RFID modules is supported.
- Test result tracking and simple production lot management are both supported by the base system.

## Customer

- Ikonprint (DK)
- TagStar System (GER)
- Avery Dennison (GER)
- Patria Nyomda (HU)
- Poligraph Zashita (RUS)
- Bartsch International (GER)
- Security Label (GER)
- RAKO (GER)
- Oriental Press (BAH)
- Inotec (GER)
- Benelli AB (SE)
- Datacon (AT)
- Hunkeler (CH)
- and other companies

